

Music Symbols

EXPLAINED



Treble Clef

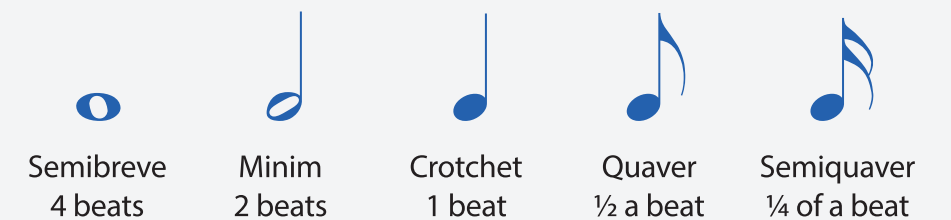
The first symbol that appears at the beginning of every music staff is a clef symbol. This symbol tells you which note is found on each line or space. A treble clef is for higher notes.

Dynamics

Dynamics are indicators of the relative intensity or volume of a musical line. This one stands for 'Mezzo Forte', which means moderately loud.

Notes

These are placed on the staff and tell us which note letter to play and how long to play it.



Bass Clef

A bass clef is for lower notes.

The Stave

5 lines and 4 spaces that each represent a different letter and therefore a different note.

Time Signature

The top number is the number of beats per bar. The bottom number indicates what type of beat they are.

Rests



Bars

A single bar divides the music into measures. A double bar indicates the end of a piece of music.